

INSTRUCTIONS FOR: WASHING GUN

MODEL: 626

1, Please read this instructions before use.

WARNING!

Disconnect the gun from the air supply before changing accessories, servicing or performing any maintenance.

Maintain the gun in good condition. Replace or repair damaged parts. Use recommended parts only. Unauthorised parts may be dangerous and will invalidate the warranty.

Keep the gun clean and rinse out nozzle and pipes with paraffin after use.

When not in use disconnect from the air supply and store in a safe, dry, childproof area.

2, Personal protective equipment

Toxic vapours- when sprayed, certain materials may be poisonous, create irritation or be otherwise read all labels before spraying and follow any recommendations. If in doubt, contact your material supplier.

The use of respiratory protective equipment is recommended at all must be compatible with the material being sprayed.

Always wear eye protection when spraying or cleaning the spraygun.

Gloves must be worn when spraying or cleaning the equipment.

3, Misuse

Never aim a spraygun at any part of the body.

Never exceed the max. recommended safe working pressure for the equipment.

Before cleaning or maintenance, all pressure must be isolated and relieved from the equipment.

DO NOT carry by the air hose, or yank the hose or the gun from the air supply.

DO NOT use the gun for any purpose other than for which it is designed and do not fill with any other fluid.

DO NOT operate the gun if damaged.

4, Noise levels

The A-weighted sound level of sprayguns may exceed 85 dB(A) depending on the set-up being used. Details of actual noise levels are available on request. It is recommended that ear protection is worn at all times when spraying.

5, Parameter

Pistolet UBS	
Air consumption	300l/m
Pressure	2 to 8 bar
Inner hose- Φ	10mm
Power	Min 350/100L 2,2-3kw
Air supply connection	1/4" w

6, PREPARING THE GUN FOR USE

Ensure the trigger is not depressed before connecting to the air supply.

Pay attention, that the operation pressure never exceeds over 8bar.

WARNING! Ensure air supply does not exceed 8bar. Too high a pressure will shorten the

product lift and may be dangerous ,causing damage and/or personal injury.

Clean air supply tank daily .Water in the air line will damage the gun and will invalidate your warranty.

Keep hoses away from heat,oil and sharp edges .Check hoses for wear and make certain that all connections are secure .

7,OPERATING INSTRUCTIONS

WARNING!Ensure you read,understand and apply the safety instructions in section 1 and follow the manufacturer's instructions on the washing gun.

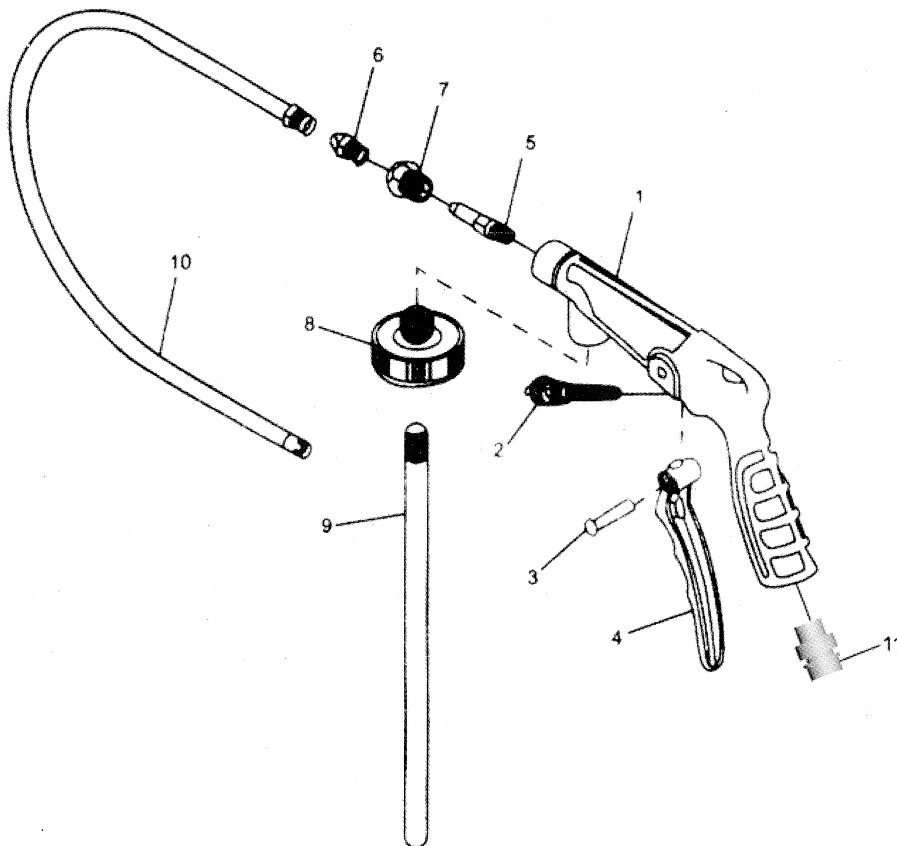
Ensure air supply is regulated to no more than 8 bar and then attach air hose to the gun .

Aim the nozzle of the gun into a safe area and depress the gun trigger to check for correct operation.

8,MANINTENANCE

WARNING! Ensure gun is disconnected from air supply before attempting any maintence.It is very important to keep the gun and components clean to ensure free passage for the WASHING After use clean all items thoroughly with paraffin and allow to dry befor storage .

PART LIST



Item	Description	Item	Description
1	Gun body	7	Screw cap
2	Air valve set	8	Fuילid cover
3	Trigger stud	9	Suction tube
4	Trigger	10	Leader hose
5	Air Nozzle	11	Air screw
6	Nozzle		