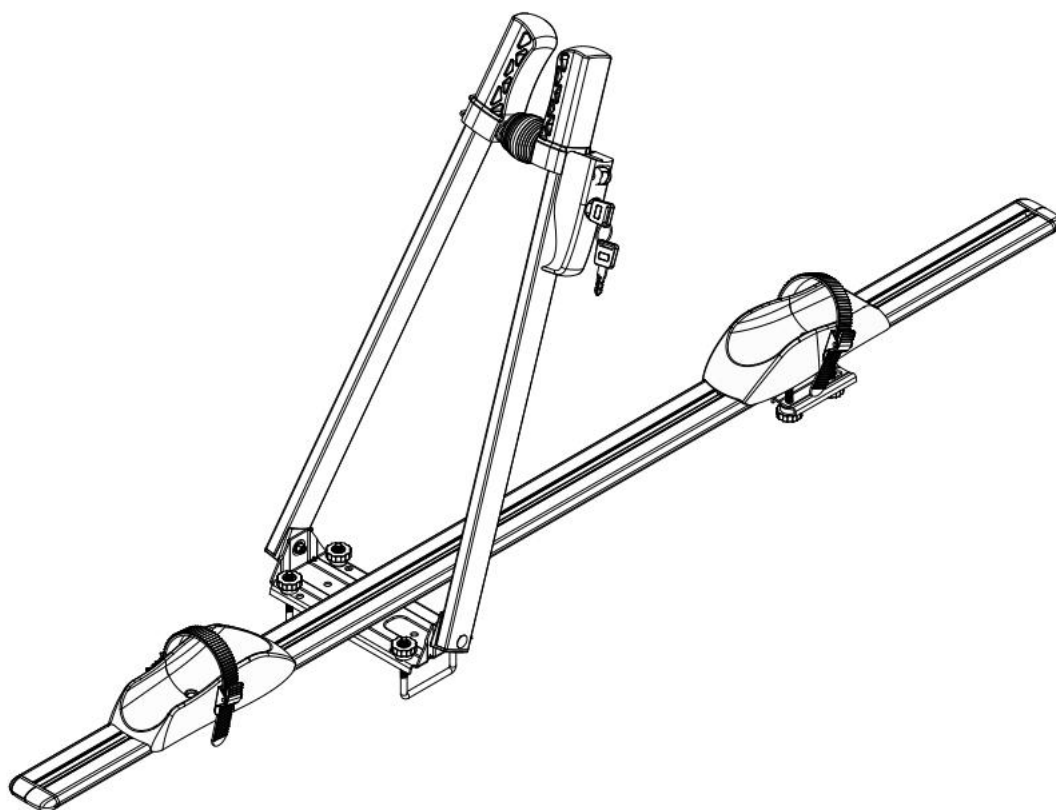


BC3011 ROOF TOP MOUNTED CYCLE CARRIER - USER GUIDE



Please read & follow this user guide & all safety instructions carefully when using this cycle carrier.

Keep the user guide for future reference. When passing the carrier onto others be sure to include all documentation. The user guide is also available on our website: www.maypoleltd.com

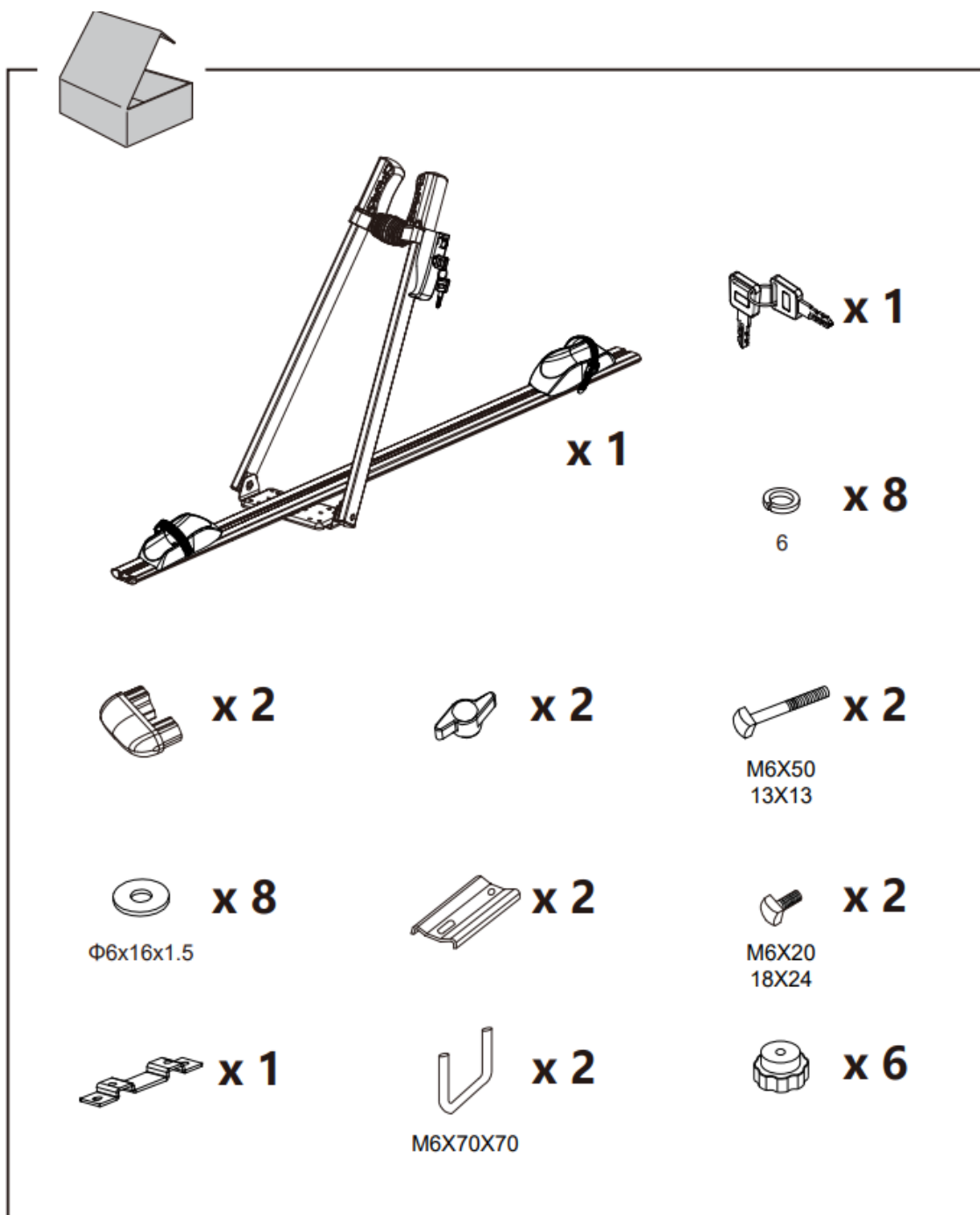
BC3011 ROOF TOP MOUNTED CYCLE CARRIER - USER GUIDE

WARNING – GENERAL SAFETY

- The attachment of this cycle carrier to a vehicle is safety critical and beyond the control of the manufacturer. The user must therefore ensure that the cycle carrier is suitable for use with their vehicle & roofbars.
- Check the parts list after opening the package.
- Make sure that all the parts are fully assembled according to the instructions before fitting to your vehicle.
- Do not use this carrier for purposes other than those for which it is designed. Do not modify any components of the product.
- This cycle carrier is only suitable for use with roofbars.
- Carrier weight is 2kg.
- Never exceed the 15kg maximum carrying capacity of this product.
- Not suitable for E-bikes.
- Make sure the maximum load capacity of the vehicle & roof bars can support the weight of the carrier and the permitted load of the carrier itself.
- This cycle carrier is not intended for transporting tandems or recumbent bicycles.
- Remove any accessories such as baby seats, panniers, pumps, water bottles, wheel covers or complete cycle covers prior to loading any cycle onto the carrier.
- Check all fixings prior to each journey and at regular intervals throughout to ensure all remain fully tightened and the cycles are secure.
- Do not use if any part of the carrier is damaged, worn or missing.
- It is critical that all of the fixings & straps are always fitted, securely fastened and tensioned appropriately. Ensure all are securely fastened before commencing journey and at regular intervals throughout.
- Make sure no part of the load comes in contact with the vehicle roof.
- Always drive with the lock securely engaged.
- Ensure the position of the cycle on the carrier does not project outside the vehicle outline.
- Drive carefully, be aware of cross winds, avoid sudden braking & hard cornering. Reduce speed accordingly when using the carrier.
- The cycle carrier will increase the overall height of the vehicle; extra care must be taken under low clearance objects (ie bridges, tunnels, gates, doors, low branches etc...)
- This carrier is designed for temporary use only; remove when not in use or before going through a car wash.
- Not designed for off road use.
- Take care to make sure that when the carrier is fitted, it does not limit the functionality or damage antennas, sun roofs spoilers or anything else present on the vehicle roof.

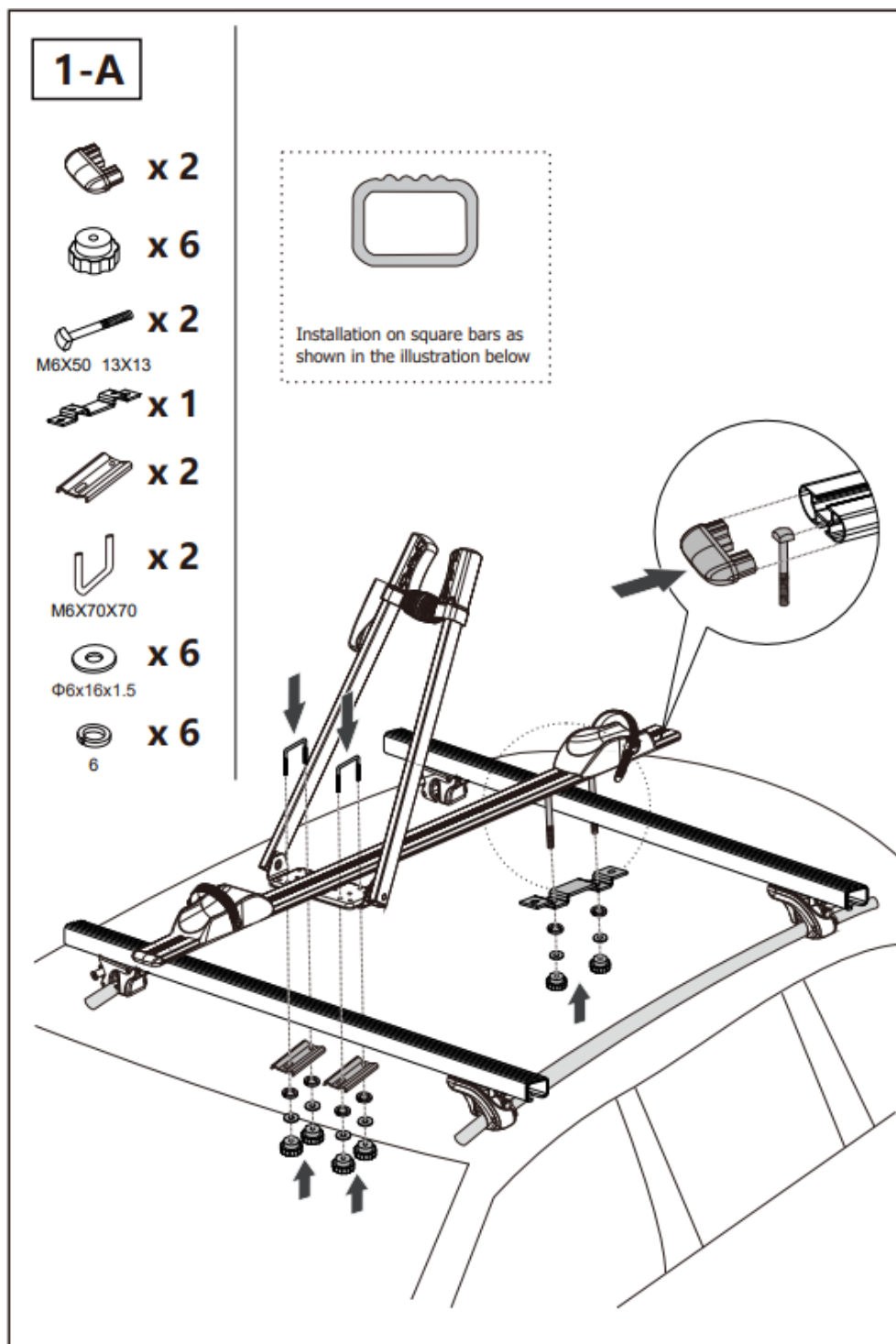
BC3011 ROOF TOP MOUNTED CYCLE CARRIER - USER GUIDE

CONTENTS

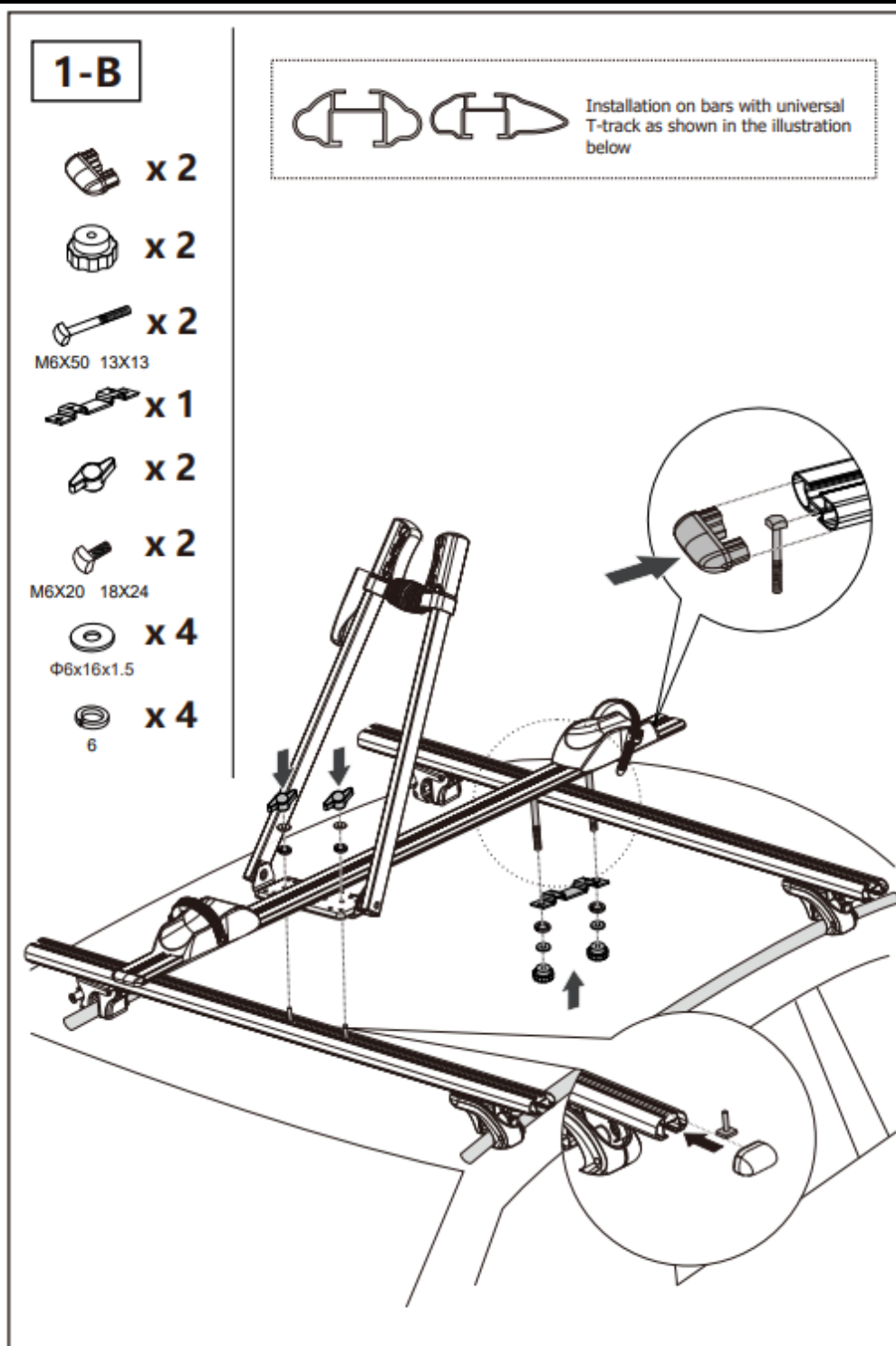


BC3011 ROOF TOP MOUNTED CYCLE CARRIER - USER GUIDE

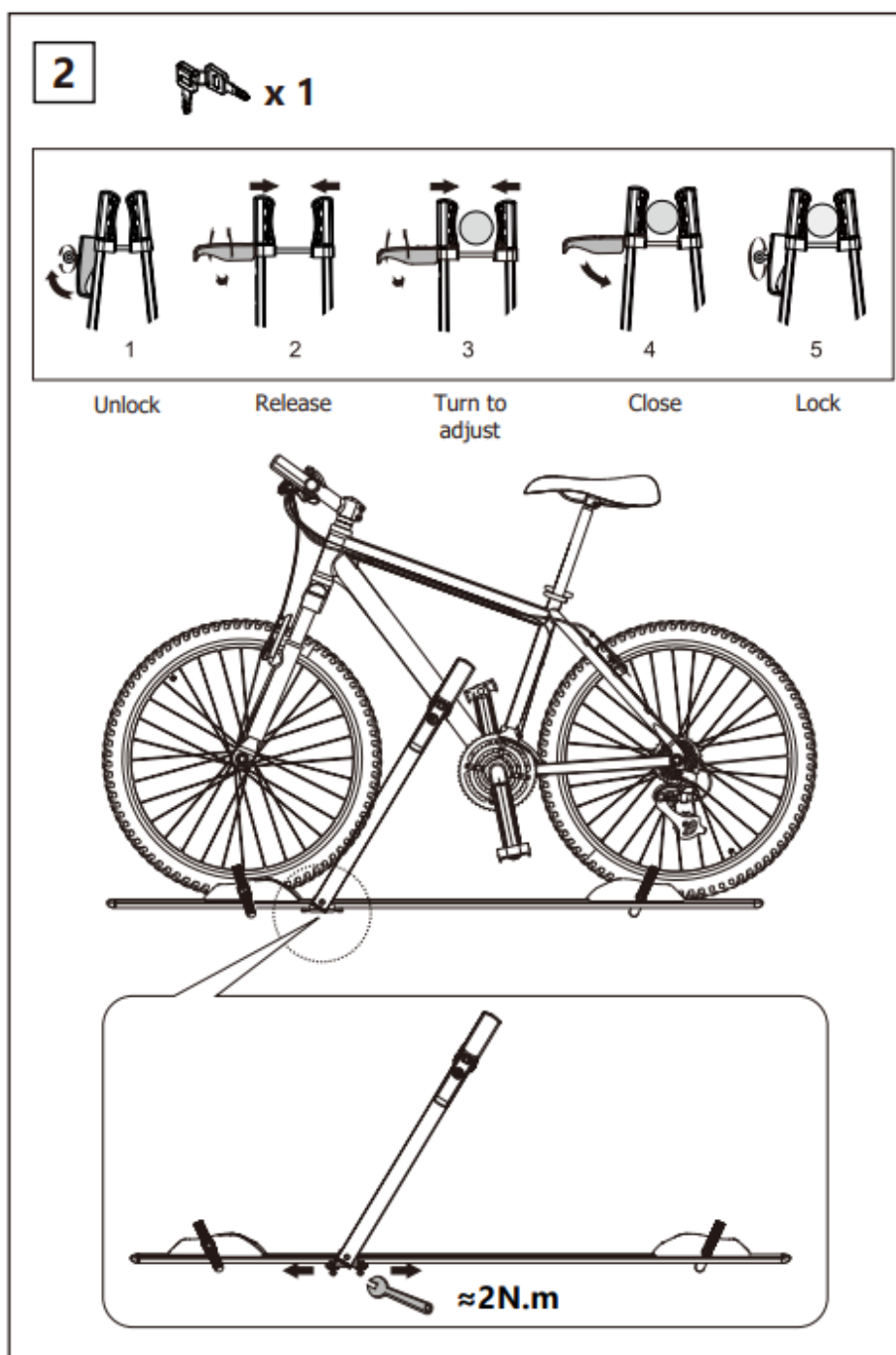
FITTING GUIDE



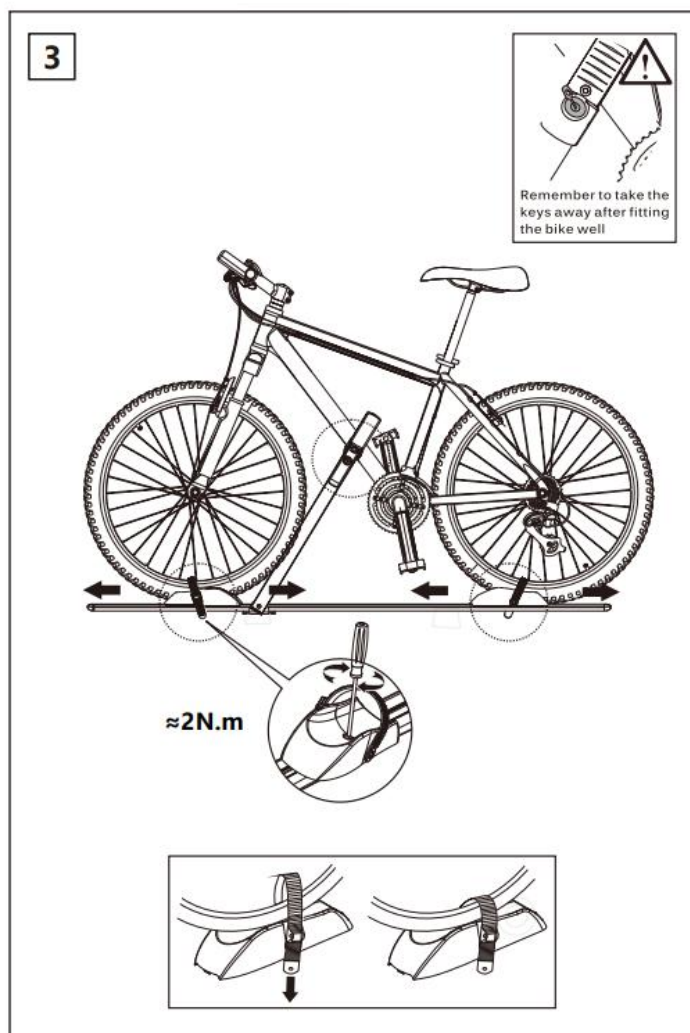
BC3011 ROOF TOP MOUNTED CYCLE CARRIER - USER GUIDE



BC3011 ROOF TOP MOUNTED CYCLE CARRIER - USER GUIDE



BC3011 ROOF TOP MOUNTED CYCLE CARRIER - USER GUIDE



WARNING: It is critical that all of the fixings & straps are securely fastened and tensioned appropriately before commencing a journey and checked at regular intervals throughout.



Signature

Technical Manager Maypole Ltd Nov 2024

Email: sales@maypoleltd.co.uk Web: www.maypoleltd.com

Maypole Ltd, 162 Clapgate Lane, Birmingham, B32 3DE, UK

Maypole Touring Ireland Ltd, 40 Mespil Road, Dublin 4, D04 C2N4, Ireland